

Crane Incident Handbook

The Warren Group, Inc.
R. John Phillips, P.E.



WARREN

Table of Contents

[Introduction](#)

[Crane Balancing Act](#)

[Requirements and Standards Applicable to Most Cranes](#)

[Load Chart Analysis](#)

[Load Moment Indicator \(LMI\) Systems](#)

[Typical Crane Incidents](#)

[Crane Incident Site Initial Steps](#)

[Measure Lift Radius](#)

[Boom Configuration](#)

[Load Determination](#)

[Other Site Documentation](#)

[Outriggers and Soil Conditions](#)

[Counterweights](#)

[Environmental Conditions](#)

[Crane Swing Mechanism](#)

[Equipment Integrity](#)



WARREN

Introduction

Cranes are powerful lifting devices that we see everyday in construction areas, shipping terminals, and industrial sites. They are so common that we often pass by them with little thought.

Cranes, however, can easily become involved in incidents that injure people or damage equipment. Cranes that are improperly sized for a job, improperly operated, or inadequately maintained will fall or drop their load despite their size and powerful appearance.

Computerized systems have been added to modern cranes that reduce the chance of operator error, but can increase the chance of overconfidence of operators and their supervisors, and also can be improperly operated themselves in a manner that can lead to accidents.

This handbook provides the basics of crane operation and safety requirements as well as guidelines for the initial investigation of crane incidents, including observations to be made at the site as well as questions to be asked during interviews of site personnel.

Crane Balancing Act

The operation of most cranes is a balancing act — one very similar to the childhood experience of using a playground seesaw. When the equipment isn't properly balanced, the crane may succumb to the tipping force and fall to one side. Such a tipover is much more common in mobile cranes rather than gantry cranes or fixed-tower cranes that are secured to a building structure.

A Battle of Forces

In many crane tipover incidents the weight of the lifted load and boom causes the crane to tip over in the direction of the load and boom. To overcome such a scenario, a crane employs a counterweight to offset the tipping force. However, if the counterweight is too heavy compared to the load and boom forces, the crane can tip over in the opposite direction toward the counterweight side. Cranes also have ground supports such as outriggers, wheels or a concrete foundation that must be able to resist the combined weights and tipping forces of the load, boom, counterweight, and crane superstructure.



WARREN

A Balanced Boom

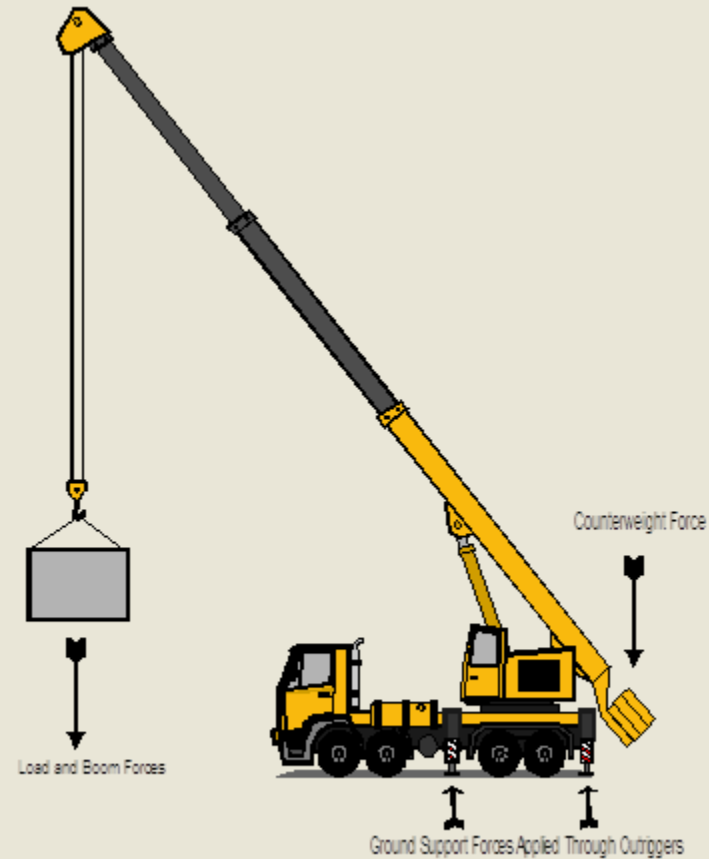
The tipping force applied through the crane boom depends on the load weight, boom length, and boom angle. The counterweight of most cranes is at a fixed distance from the crane point of balance and has limited capacity for adjustment for a specific load and boom angle. The crane ground support can provide increased resistance to tipping as its width and weight distribution increase beyond being a simple hinged seesaw point, but the effectiveness of the ground support can be limited by the area where the crane is located or must traverse. In many circumstances, a mobile crane equipped with full counterweights can tip over in the direction of the counterweights if the boom is raised to a high angle with an insufficient load applied to the boom.

Achieving Strength and Stability

Crane manufacturers must follow the American Society of Mechanical Engineers (ASME) B.30 series safety standards as required by the Code of Federal Regulations (CFR) regarding crane stability and strength. These standards require certain design and testing elements as well as the publication of crane load charts that are posted in sight of the operator. The crane load charts state the safe working loads for certain loads, boom angles, crane configurations, and counterweights.



This simple diagram shows the loads that contribute to the stability of a mobile truck crane



- Many modern cranes are equipped with computerized load moment indicators (LMI) that warn the operator as tipping forces are approached and even limit the crane movements that can cause a tipover. The LMI systems do not sense every tipping force applied to the crane such as inadequate ground support, the number of counterweights on the crane, and the boom and boom rigging configuration. These systems still must rely on the operator to properly position the crane and input the crane lifting conditions in order to prevent a tipover.
- With the equipment in proper alignment, the crane remains stable and upright, ready to move large, heavy loads. The crane — and people and industries that rely on it — can go about their tasks, safely and securely.



Common Crane Types

- **Friction** (Older, use systems of clutches and brakes driven by crane engine and gearbox, sometimes this type of crane is mandated by construction documents)
- **Hydraulic** (Most modern mobile cranes, motive and lifting functions powered by hydraulic pump(s) driven by crane engine, controls are electronic or hydraulic)
- **Hybrid** (Construction cranes that are driven by hydraulic power with pneumatic controls, often seen at roadway and bridge construction sites)
- **Electric** (Powered by either engine driven generator or festooned cables, often maintain constant electrical load by sending power to resistor banks or regenerative loading to power source)

ASME B30.5 Definitions For Mobile Cranes

ASME B30.5-1994

MOBILE AND LOCOMOTIVE CRANES

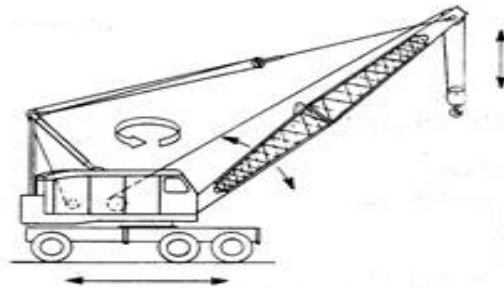


FIG. 1 WHEEL-MOUNTED CRANE
(SINGLE CONTROL STATION)

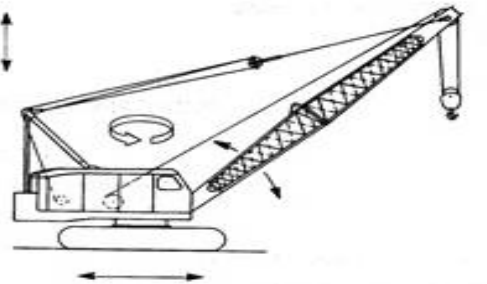


FIG. 2 CRAWLER CRANE

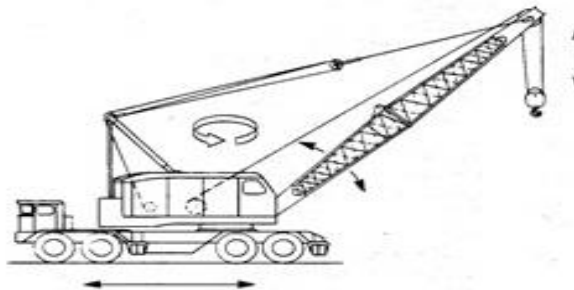


FIG. 3 WHEEL-MOUNTED CRANE
(MULTIPLE CONTROL STATION)

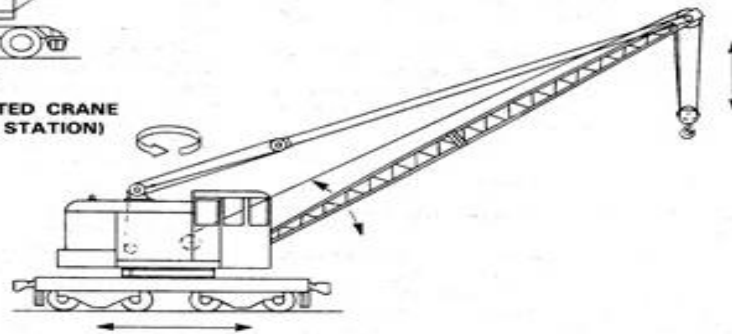


FIG. 4 LOCOMOTIVE CRANE

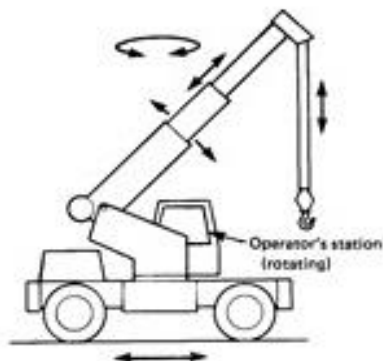


FIG. 5 WHEEL-MOUNTED CRANE — TELESCOPING BOOM (SINGLE CONTROL STATION)

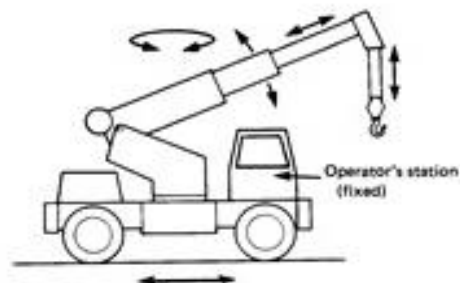


FIG. 6 WHEEL-MOUNTED CRANE — TELESCOPING BOOM (SINGLE CONTROL STATION)

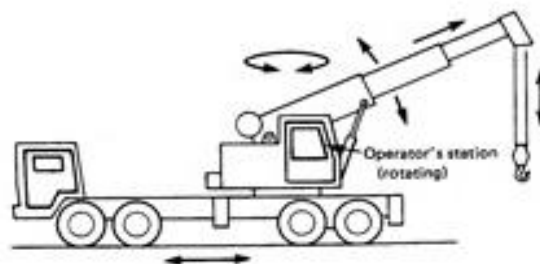


FIG. 7 WHEEL-MOUNTED CRANE — TELESCOPING BOOM (MULTIPLE CONTROL STATION)

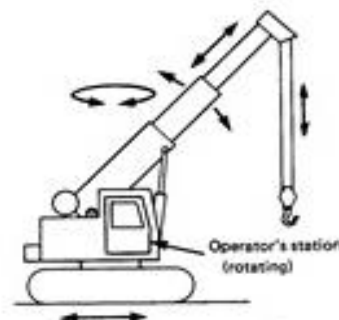


FIG. 8 CRAWLER CRANE — TELESCOPING BOOM

GENERAL NOTE TO FIGS. 5 THROUGH 10:

The boom may have a base boom structure of sections (upper and lower) between or beyond which additional sections may be added to increase its length, or it may consist of a base boom from which one or more boom extensions are telescoped for additional length. These illustrations show some types.

Requirements and Standards Applicable to Most Cranes

- Code of Federal Regulations
 - OSHA
 - CFR 1910.179 Overhead and Gantry Cranes
 - CFR 1910.180 Crawler Locomotive and Truck Cranes
 - CFR 1910.181 Derricks
 - Marine Terminals
 - CFR 1917.45 Cranes and Derricks
 - CFR 1917.46 Load Indicating Devices
 - Safety and Health Regulations for Construction
 - CFR 1926.1400 Cranes and Derricks in Construction
- ASME B.30 Standard Series
- SAE Standards
- Crane Manual!!!



Load Chart Analysis

- Every crane is required to have a load chart specific to the crane in the operator's cab as well as the operator's manual
- In general, the load chart for a mobile crane will be split by a dark line showing the maximum load for structural capacity above the line and the 85% tipping capacity below the line. Neither capacity should be exceeded because they allow for the added dynamic loads anticipated during a crane lift.
- The crane operator must know the lift weight as well as the radius before attempting a lift. With a standard load chart the lift weight must be determined by documentation or a reasonable estimate provided by the lift director, and the lift radius determined by a tape measure from the crane centerline or a boom angle indicator.
- The crane manual provides further definition to the crane load chart as to what adds to the total lift weight. This usually includes the boom configuration, the crane hook, and extensions stowed on the boom.
- Crane load charts often have different capacities based on outrigger and boom positions.
- Rigging equipment must be included in the lift weight.
- Side loading of the crane boom is not included in the load chart. Crane booms normally have no designed capacity for side loading and side loading should not be attempted.



ON OUTRIGGERS FULLY EXTENDED - 360°

Radius in Feet	Main Boom Length in Feet									
	36	42	51	60	69	78	87	96	105	114
10	180,000 (57)	121,500 (70.5)	114,000 (74)	107,500 (77)	103,000 (79)					
12	158,000 (63)	120,000 (67.5)	110,000 (71.5)	101,500 (75)	99,300 (77.5)	93,650 (79.5)				
15	136,000 (57.5)	115,000 (63)	102,000 (68)	92,100 (72)	90,250 (75)	84,500 (77)	73,350 (79)			
20	103,500 (47)	99,800 (54.5)	90,050 (61.5)	78,650 (67)	76,850 (70.5)	70,500 (73)	62,750 (75.5)	60,000 (77.5)	56,100 (79)	43,850 (80)
25	82,600 (34)	80,100 (45.5)	73,850 (55)	68,900 (61.5)	66,250 (66)	60,150 (69.5)	54,250 (72)	52,250 (74.5)	48,650 (76)	40,950 (77.5)
30		65,550 (34)	61,400 (47.5)	57,650 (55.5)	55,400 (61)	52,400 (65)	46,900 (68.5)	44,900 (71)	42,900 (73)	35,100 (75)
35	See Warning Note 16	51,250 (15.5)	51,250 (38.5)	49,700 (49.5)	46,600 (56)	44,950 (61)	41,150 (65)	39,200 (68)	37,300 (70)	30,400 (72)
40			40,250 (28.5)	40,250 (42.5)	40,250 (51)	38,550 (56.5)	36,550 (61)	34,650 (64.5)	32,800 (67)	26,650 (69.5)
45				32,600 (34.5)	32,600 (45)	32,600 (52)	32,400 (57)	30,950 (61)	29,150 (64)	23,600 (66.5)
50				26,950 (24)	26,950 (38.5)	26,950 (47)	26,950 (53)	26,950 (57.5)	26,150 (61)	21,350 (63.5)
60					19,200 (20)	19,200 (35)	19,200 (43.5)	19,200 (49.5)	19,200 (54.5)	17,300 (57.5)
70						14,100 (16.5)	14,100 (32)	14,100 (41)	14,100 (47)	14,100 (51.5)
80							10,550 (12.5)	10,550 (29.5)	10,550 (38.5)	10,550 (44)
90									7,890 (27.5)	7,890 (35.5)
100										5,830 (24.5)
Minimum boom angle (deg.) for indicated length (no load)										0
Maximum boom length (ft.) at 0 deg. boom angle (no load)										114

NOTE: Boom angles are in degrees.

AS-425-307736 & -007740

A typical load chart



Load Moment Indicator Systems (LMI)

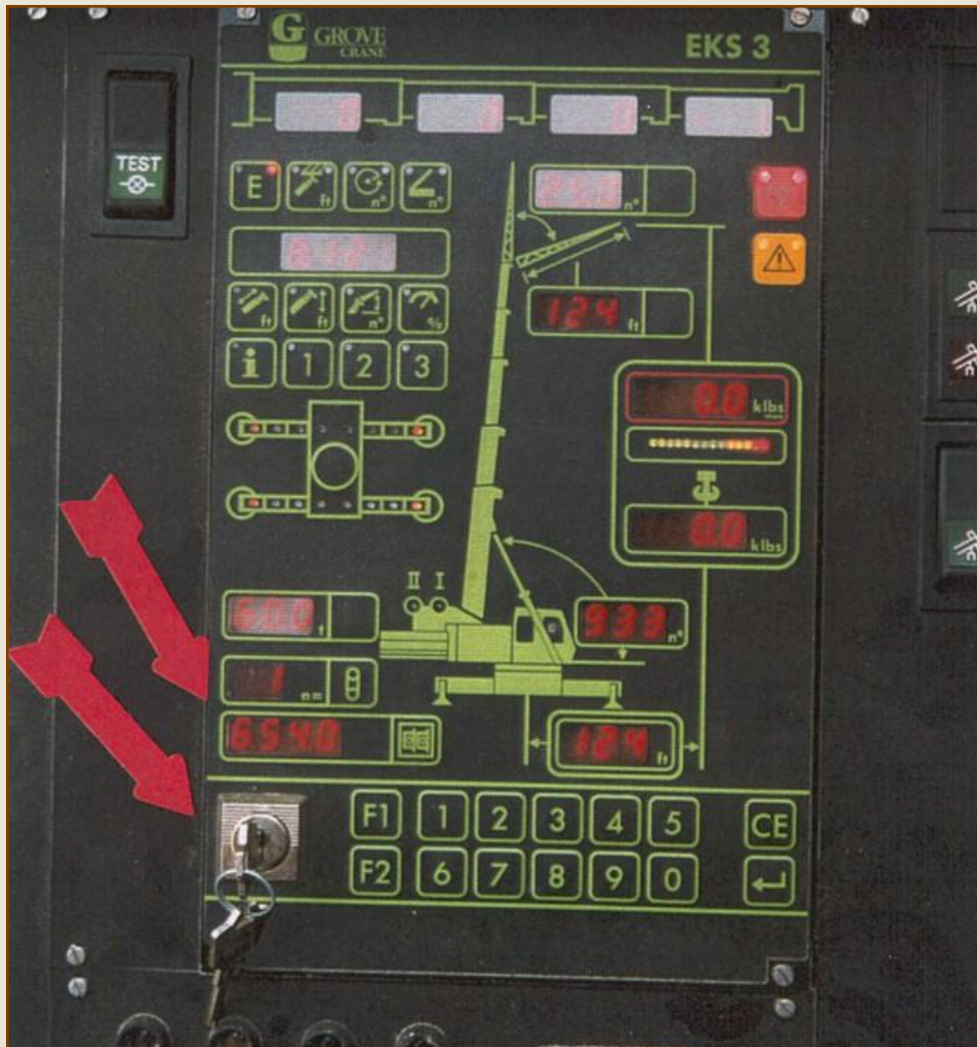
- LMI systems are computerized equipment provided on most newer cranes to inform the operator of the load weight and radius, as well as any approaching overload conditions.
- LMI systems will shut down the lift as any overload conditions are approached and will force the operator to return to a safe crane loading.
- Most LMI systems do not sense all crane functions and require operator input as to boom length, any boom extensions, boom reeving, crane outrigger positions, etc. at crane startup. The newer systems require the operator to input this information at each crane startup.
- LMI systems depend on correct operator inputs prior to crane lifts.
- LMI systems cannot detect or account for soil conditions, wind conditions, or other environmental conditions. Those conditions remain the responsibility of the crane lift director.
- LMI systems usually have override keys that will allow continued crane operation beyond LMI limits. These overrides are sometimes needed to recover from lifts where the LMI locks out the crane functions due to overload, but are sometimes improperly used by crane operators to bypass the LMI. The override keys are sometimes prohibited to be in the possession of the crane operator or even at the job site.



WARREN



An older Grove PAT LMI (Load Moment Indicator)



A Grove SLI LMI System

2 294 874
2 295 054

Crane with 132 300 lbs (60,0 t) Counterweight (Stützbasis 28.4 x 28.2 ft)									
Length of boom extension 125 ft									
Angle of boom extension 25°									
Main boom - fixed lengths in ft									
	47.6	63.4	79.2	95.0	110.8	132.9	142.3	164.4	173.9
Tel. sec. I	0.0	0.5	0.5	1.0	1.0	1.0	1.0	1.0	1.0
Tel. sec. II	0.0	0.0	0.5	0.5	1.0	1.0	1.0	1.0	1.0
Tel. sec. III	0.0	0.0	0.0	0.0	0.0	0.7	1.0	1.0	1.0
Tel. sec. IV	0.0	0.0	0.0	0.0	0.0	0.0	0.0	0.7	1.0
Slewing range	360°								
Radius in ft	Lifting capacities in 1000 lbs								
80.0	11.0	11.4	11.6						
85.0	10.4	10.8	11.0						
90.0	9.8	10.2	10.4	10.6	10.8				
95.0	9.4	9.6	10.0	10.2	10.4	10.4	10.4		
100.0	8.8	9.2	9.6	9.8	10.0	10.0	10.0		
105.0	8.4	8.8	9.2	9.4	9.6	9.6	9.6	9.4	8.6
110.0	8.0	8.4	8.8	9.0	9.2	9.4	9.4	9.2	8.4
115.0	7.6	8.0	8.4	8.6	8.8	9.0	9.0	8.8	8.4
120.0	7.2	7.6	8.0	8.4	8.6	8.8	8.8	8.6	8.4
125.0	6.8	7.4	7.8	8.0	8.2	8.4	8.6	8.4	8.2
130.0	6.6	7.0	7.4	7.8	8.0	8.2	8.2	8.2	8.0
135.0	6.2	6.8	7.2	7.4	7.8	8.0	8.0	8.0	7.8
140.0	6.0	6.4	6.8	7.2	7.4	7.8	7.8	7.6	7.6
145.0	5.8	6.2	6.6	7.0	7.2	7.6	7.6	7.4	7.4
150.0	5.6	6.0	6.4	6.8	7.0	7.2	7.4	7.2	7.2
155.0		5.8	6.2	6.6	6.8	7.0	7.2	7.0	7.2
160.0		5.6	6.0	6.2	6.6	6.8	7.0	6.8	7.0
165.0		3.8	5.8	6.0	6.4	6.6	6.8	6.6	6.8
170.0			5.6	6.0	6.2	6.6	6.6	6.4	6.6
175.0			5.4	5.8	6.0	6.4	6.4	6.2	6.6
180.0				5.6	5.8	6.2	6.2	6.0	6.4
185.0				5.4	5.8	6.0	6.2	5.8	6.2
190.0				5.4	5.6	6.0	6.0	5.6	6.2
195.0				5.2	5.4	5.8	5.8	5.4	6.0
200.0					5.4	5.6	5.8	5.4	5.8
205.0					4.6	4.8	4.8	5.2	5.6
210.0						3.8	3.8	4.6	4.6
215.0						3.0	3.0	3.6	3.8
220.0						2.0	2.0	2.8	3.0
225.0								2.0	2.2
SLI - Code	654								
Max. permitted wind speed	30 ft/s								

A Grove Crane load chart showing the operator inputs to enter the correct SLI code (654) into the LMI system.

Typical Crane Incidents

- Excessive lift radius for load capacity
- Lack of proper taglines to control load
- Inadequate ground support
- Boom side loading, particularly in pile driving or removal
- Inaccurate load estimate
- Improper LMI system setup or operator override
- Operator inattention
- Inadequate counterweight
- Improper load handling/rigging
- Excessive winds
- Improper operation of crane swing mechanism
- Mechanical damage/equipment failure

Crane Incident Site Initial Steps

- How long before the equipment is moved? Is there time to photograph and measure the scene? If there is not enough time to measure the scene, paint marks or flags will help in further investigation.
- What was the intended lift?
(load, lift, radius, boom configuration, outrigger position)
- What happened?
- Who witnessed the incident? Interview participants, many will be moved to other job sites or other employment a short time after the incident
- Who was the lift director?
- Request power up of LMI system, if in place, to determine settings. The crane batteries often lose power a few days after a tipover so this data could be lost.

Crane Incident Site Initial Steps, Continued

- Identify crane manufacturer, model number, serial number, load chart number
- **Obtain or photograph the crane manual and load charts!!**
- The crane manual and charts are required to be in the operator's cab but are often confiscated by regulating authorities soon after an incident.
- The answer is (almost) always in the manual and charts.
- Manuals and charts are specific to individual cranes.
If you don't get them at the initial site inspection, you may never get them!
- If the crane manuals and load charts are not released, photograph the applicable parts of the manual and load charts
- Nomenclature specific to the crane is often contained in the manual and charts

Identify Parties

- ☐ Crane ownership
- ☐ Bare rental or with operator
- ☐ Lift director
- ☐ Relationship among entities at site
- ☐ Who maintains the crane
- ☐ Operator's employer
- ☐ Operator's experience/qualification
- ☐ Rigger/ironworker's employer
- ☐ Load owner
- ☐ Rigging equipment supplier
- ☐ Load manufacturer's lift instructions

MANITOWOC ENGINEERING CO. (a division of The Manitowoc Company, P.O. Box 79, Manitowoc, Wisconsin 54221)

4100-N SERIES 1

Machine Model **4100-N SERIES 2** Machine Type **LIFT** Machine Serial No. **41607**

Capacity Chart for the Machine: **SERIES 1, FORM 6 6950-A-3-12-78, 6287-A-3-C-5-13-78**

SERIES 2, FORM 6934-A-7-27-78, 6935-A-3-C-11-17-78

Other Information: **OPERATES WITH ANSI B30.5 -1968 CODE**

Parts Manual No. **6957** Service Manual No. **41607**

THIS MACHINE IS COVERED UNDER VARIOUS UNITED STATES AND FOREIGN PATENTS. CONSULT FACTORY FOR FURTHER INFORMATION.

NOTICE

READ SERVICE MANUAL:

The Service Manual supplied with and considered part of this machine must be studied and understood by each person responsible for the operation and for maintenance of this machine and beyond as noted. Such persons must be knowledgeable of this type of machinery and its terminology, and skilled in the type of work for which they are responsible. Manitowoc Engineering Co. shall not be responsible for accidents involving these personnel.

SERVICE MANUAL MUST BE KEPT IN HOLDER PROVIDED.

WARNINGS

OPERATOR SKILL AND JUDGMENT NECESSARY

Safe and efficient operation of this machine requires that it be maintained in good condition and that its operator be thoroughly knowledgeable of its controls and capability and be dextrous in its manipulation. Such operation is critically dependent on sound judgment and skillful handling, similar to that of a plane or ship, since there are no automatic speed or position limiting device (except the engine governor and boom hoist switch shut-out). Certain extra equipment such as load indicating or load moment device, power line proximity device, etc., may be added to this machine.

WARRANTY

A typical crane label identifying the manufacturer, model number, and serial number.

CM

CM COMPANIES
CRANE & MACHINERY, INC.
9655 Industrial Drive, Bridgeview, IL. 60455
(708) 430-5300

MODEL # 4100

SERIAL # 110

UNIT # 13

OWNER 110

This crane was inspected on 12/2/11

and at the time of inspection unit complied

with OSHA 1926.550 & 1910.180 and

with ANSI B 30.5 Date to

be inspected again 12/2/12

Inspector's initials 110

Crane Inspector Manager 110

A certification label showing that a crane was recently inspected.

Measure Intended and Actual Lift Radius

- Both are based on the load radius from the crane centerline pivot pin
- The actual lift radius when a crane tipped or a boom collapsed can be difficult to determine because the load may swing away from the crane as it falls

Excessive Load Radius



A wall framing section that is being lifted beyond its intended lift radius and beyond the crane capacity after the wall section rotated because its orientation was not properly controlled by taglines to ground personnel.



The crane boom after it buckled due to overload because of excessive lift radius.

Boom Configuration and Attachments

- Inspect/measure/document
- Mounted attachments not in use
can effect lift capacity
- Mounted attachments can include boom extensions that are not in use as well as boom transportation materials such as wood protective cribbing



WARREN

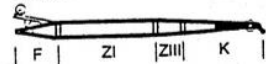
Overview and order of installation

The separate components of the boom extension can be assembled in seven different versions.

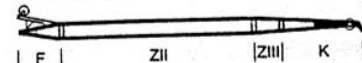
Length: 32.8 ft



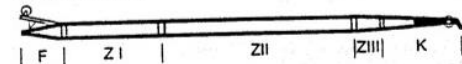
Length: 55.8 ft



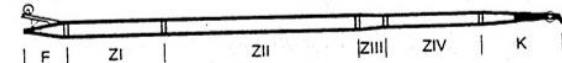
Length: 78.7 ft



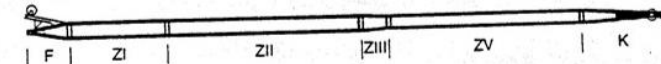
Length: 101.7 ft



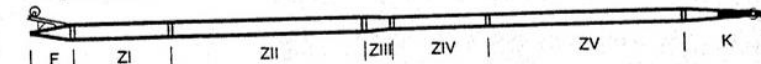
Length: 124.7 ft



Length: 147.6 ft ¹⁾



Length: 170.6 ft ¹⁾



AD4442

¹⁾ With lengths between 147.6 ft and 170.6 ft the holding rods must be removed from all intermediate sections and the head!

01.09.1997

A diagram from a crane manual showing the different boom configurations that can be used.

Load Determination

- Not just item being lifted
- Everything between boom and load
- Boom attachments



WARREN



A crane hook block that must be considered as part of the total crane load. The hook block weight is stamped on a metal plate.

LOAD CALCULATION						
TYPE	LOCATION	MEMBER	UNIT	WT/UNIT	QUANT	TOTAL WT
Column	A/6'3" - A/6'53'	W14x145	ft	145	50	7250.0
Column	A/5'3" - A/5'53'	W14x120	ft	120	50	6000.0
Column	A/4'3" - A/4'53'	W14x211	ft	211	50	10550.0
Beam	A/6'20' - A/5'20'	W12x30*	ft	30	22	660.0
Beam	A/6'34.5' - A/5'34.5'	W12x30*	ft	30	22	660.0
Beam	A/6'50' - A/5'50'	W14x34*	ft	34	22	748.0
Beam	A/5'17' - A/4'17'	W12x30*	ft	30	24	720.0
Beam	A/5'34.5' - A/4'34.5'	W14x34*	ft	34	24	816.0
Beam	A/5'50' - A/4'50'	W14x34*	ft	34	24	816.0
Brace	A/4'3' - A/5'17'	L3x4x1/4	ft	5.8	26.75	155.2
Brace	A/4'17' - A/5'3'	L3x4x1/4	ft	5.8	26.75	155.2
Brace	A/4'17' - A/5'34.6	L3x4x1/4	ft	5.8	27.75	161.0
Brace	A/4'34.6 - A/5'17'	L3x4x1/4	ft	5.8	27.75	161.0
Brace	A/4'34.5' - A/5'50'	L3x4x1/4	ft	5.8	26.75	155.2
Brace	A/4'50' - A/5'34.5'	L3x4x1/4	ft	5.8	26.75	155.2
Brace	A/5'20' - A/6'34.5'	L3x4x1/4	ft	5.8	24.75	143.6
Brace	A/5'34.5' - A/6'20'	L3x4x1/4	ft	5.8	24.75	143.6
Brace	A/5'34.5' - A/6'50'	L3x4x1/4	ft	5.8	25.34	147.0
Brace	A/5'50' - A/6'34.5'	L3x4x1/4	ft	5.8	25.34	147.0
Base Plate	A/4'3'	PL28.25X28.25X2.75	ft^3	492	1.27	624.8
Base Plate	A/5'3'	PL28.25X28.25X2.76	ft^3	492	1.27	624.8
Base Plate	A/6'3'	PL28.25X28.25X2.77	ft^3	492	1.27	624.8
Bolts	Varies	5/8" x2" w/washer & nut	100 ea	41	2.08	85.3
Scaffold	Varies	2" O.D. x 1/8" x40'	ft	3	40	120.0
Scaffold	Varies	2" O.D. x 1/8" x40'	ft	3	40	120.0
Scaffold	Varies	(18) 2" O.D. x 1/8" x6'	ft	3	108	324.0
Standoffs	Varies	(18) 3" x3" x1/4" x13"	ft	4.9	19.5	95.6
Shear Plates	Varies	(26) 21"x9" x3/8"	ft^3	492	1.0664	524.7
Top Angle		(2) 3" x4" x1/4" x18.67'	ft	5.8	37.34	216.6
Wall Section Total						33,104
Spreader			ea	7800	1	7800.0
Load Block			ea	5300	1	5300.0
Sling	1-1/2" wire rope		ft	3.60	68	244.8
Cables	1-1/4" wire rope		ft	2.50	48	120.0
Hoist Line	1-1/8" wire rope		ft	2.03	150	304.5
Pear Link				50	1	50.0
Strap			ea	200	1	200.0
Shackles			ea	45	7	315.0
Boom Sheaves			ea	1500	1	1500.0
Jib Boom			ea	3000	1	3000.0
Lift Equipment Total						18,834
Grand Total						51,938

A load calculation spreadsheet. The load weight and the rigging equipment weight are both calculated.

Other Site Documentation

- Load final position
- Boom final position
- Tagline usage
- Rigging equipment
- Site landmarks
- Soil slope
- Equalizer position, wraps on boom drum

Outriggers and Soil Conditions

- Was the crane level?
- What was the outrigger use and position for mobile cranes?
- What crane mats and cribbing were used?
- What was the soil firmness?
- What soil impressions were left?



**A typical mechanical bubble level in a crane operator's cab.
The bubbles are showing that the crane is out of level.**

Outriggers and Soil Conditions

- Mobile cranes depend on stability through their outriggers. These are the four “legs” that are deployed onto soil or other working surfaces adjacent to the crane. When a mobile crane is set up at a site, the outriggers are deployed by a hydraulic mechanism that extends the four outriggers beyond the crane body and then jack the crane free of its wheels so that it is supported by the outriggers only.
- The ability of the crane to be supported to its rated loads is sometimes governed by the bearing capacity of the working surface to resist the loads applied by the crane outriggers. The outriggers are equipped with pads to distribute those loads, but the ability of the working surface under the pads to withstand those loads is often unknown.
- Detailed soil testing and evaluation is sometimes done to determine the ability of the working surface to withstand crane loads, however that is often impracticable at sites where the crane is used for only one lift or is moved frequently around a site. Instead, it is common to use a visual examination as well as crane mats to further distribute the outrigger loads. The mats provide a strong surface with a larger bearing area than provided by the outrigger pads on a crane. These mats have traditionally consisted of wood cribbing or wood pads made by the crane owner. More recently, companies have begun selling crane mats constructed of steel or other materials that are more portable and longer lasting than traditional mats.



A view of a wood crane mat that helps distribute the crane applied load. This wood mat appears simple but actually reduces the crane applied load to the working surface by about 400 percent when calculated in pounds per square foot.

Any investigation of a mobile crane turnover involves an evaluation of the working surface supporting the crane outriggers. This is not always an easy evaluation because the outriggers often dig in to the surface as the crane tips. It must be determined whether any damage to the working surface under the outriggers was the cause or result of the crane tipping.



Impressions showing good soil support of a crawler crane after an overload incident

Counterweights

- How many were in place? Counterweights are often removable for mobile crane transport to reduce highway loads. The removable counterweights generally require additional tractor trailers for transport in addition to an assist crane and additional crew members to install them.
- Superstructure and carbody counterweights. In addition to the readily visible superstructure counterweights there are often less visible carbody counterweights.
- Counterweight position. Some cranes have the ability to retract and extend counterweights as needed for transport and lifting operations.



Removable crane superstructure counterweights. Different numbers of these counterweights will be installed depending on the crane loading.



A crane with an extendable counterweight. The operator left the counterweight in the retracted position while extending the boom at a low angle.

The crane tipped under the force of the boom alone because the counterweight was not positioned to resist the boom load. There was no load attached to the boom other than the hook block.

Environmental Conditions

- Wind effect on boom and load
- Rain effect on supporting soils
- Ground slope during a pick and carry operation

Crane Swing Mechanism

- Is it intact?
- Is the swing brake operable and in good condition?
- Was the swing lock (house lock) operable and engaged? The swing lock should always be engaged except when intentionally rotating the crane superstructure.



WARREN



A rough terrain crane that swung unexpectedly while operating on a slope, damaging the crane boom.



The swing motor and the swing lock on the crane shown in the previous photograph. The swing brake is built into the cylindrical swing motor. The swing lock is to the right of the swing motor.



The swing brake controls of the crane previously shown.

The swing brake is set by the pedal on the left, which is self-locking similar to the parking brake of a car, and is released by the knob above the pedal.

The swing lock is separately operated.

Equipment Integrity

- Check boom, main, and auxiliary hoist integrities
- Check automatic and auxiliary brake condition and adjustment
- Check hoist clutch adjustments if applicable
- Check boom locking pawl operation. The locking pawl, if provided, must always be engaged except when intentionally changing the boom angle
- Check wire ropes for type of failure mechanisms
- Check rigging equipment for adequate design and condition



A friction crane that had its boom drop during a routine lift.



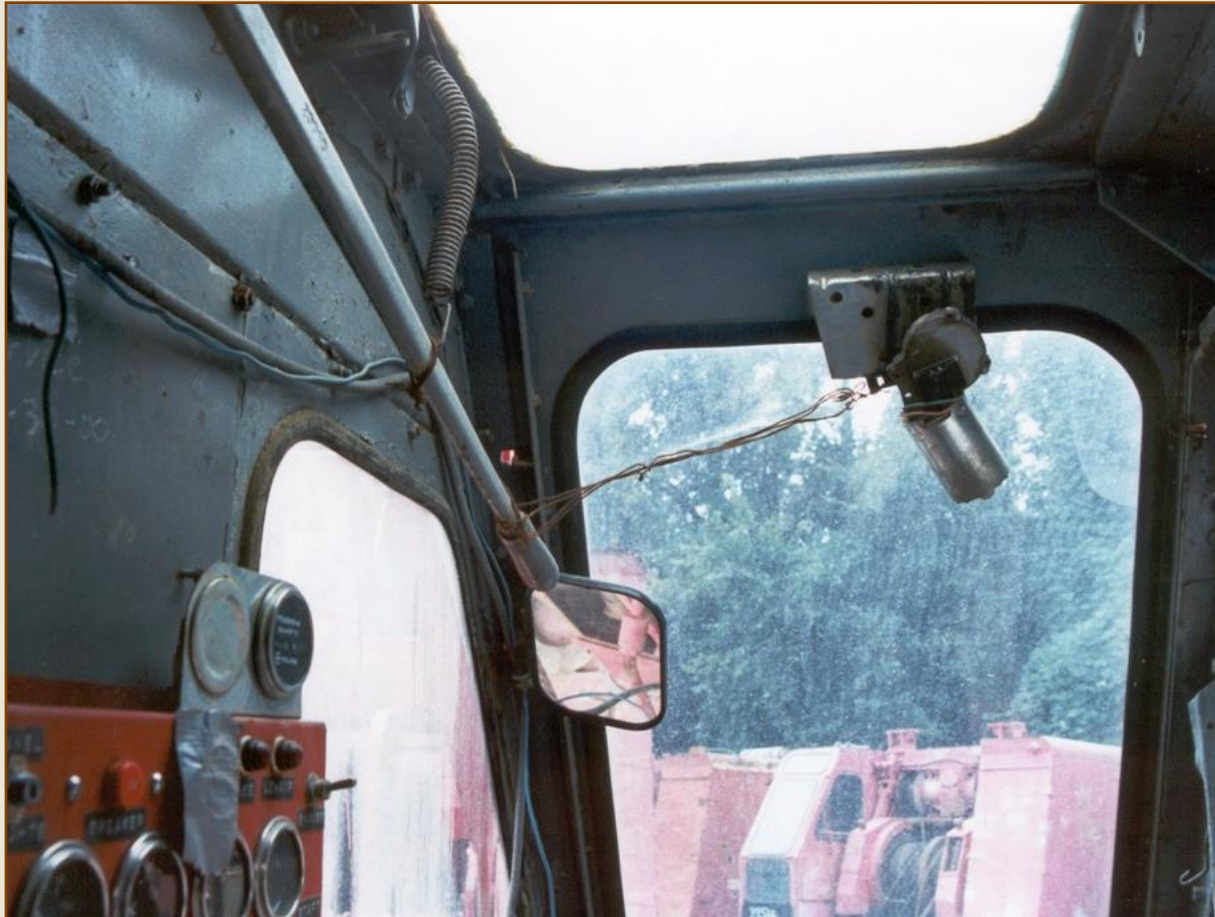
Brake adjustment measurement on the friction crane in the previous photograph.



Boom hoist drive clutch measurement on the same friction crane.



Boom hoist gearbox inspection.



A boom hoist auxiliary brake handle that had been made inoperable by the wire near the center of the photograph. The crane operator had installed the wire to lift the handle out of his way.

Prior Boom Damage

- Corroded fracture surfaces
- Overall corrosion
- Poor weld quality
- Mismatched repairs



Lattice boom parts after a boom collapse. It is normal to find multiple parts that separated during a boom collapse. All of the parts need to be inspected to see if any were defective in a manner that reduced the boom capacity.



Lattice boom fracture surfaces that were caused by a boom overload.